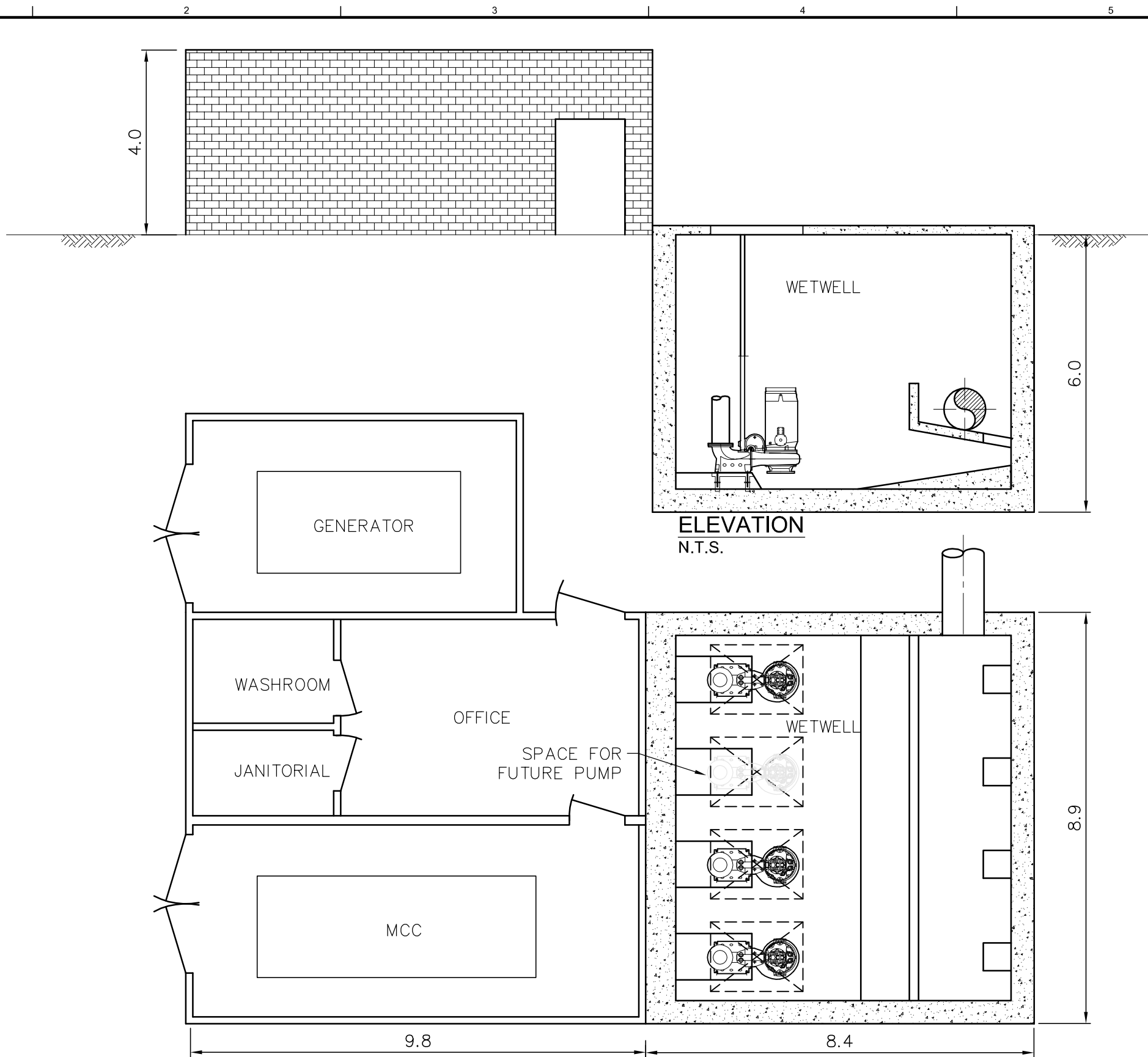


CH2M HILL Vancouver: P:\RegDist\CmxStrathcona\332069ForcemainAsemt\500Design\WorkingFiles\503Studies\CAD\figures\EXHIBIT 5-3.dwg Oct 27, 2005-11:21am



PLAN
N.T.S.

ELEVATION
N.T.S.

PRELIMINARY

NOT FOR
CONSTRUCTION

| | | | | | | | | | |
|------|-------------|-----|------|----------|----|------|--|--|--|
| DSGN | AW | | | | | | | | |
| DR | GC | | | | | | | | |
| CHK | CHECKED-BY | | | | | | | | |
| APVD | APPROVED-BY | NO. | DATE | REVISION | BY | APVD | | | |

VERIFY SCALE
BAR IS ONE INCH ON ORIGINAL DRAWING.
0 1"
IF NOT ONE INCH ON THIS SHEET, ADJUST SCALES ACCORDINGLY.

CH2MHILL

REGIONAL DISTRICT OF
COMOX STRATHCONA

PUMP STATION PLAN & PROFILE
EXHIBIT 5 - 5

| | |
|-------|-------------|
| SHEET | |
| DWG | |
| DATE | OCT 7, 2005 |
| PROJ | 332069 |

REUSE OF DOCUMENTS: THIS DOCUMENT, AND THE IDEAS AND DESIGNS INCORPORATED HEREIN, AS AN INSTRUMENT OF PROFESSIONAL SERVICE, IS THE PROPERTY OF CH2M HILL CANADA LIMITED AND IS NOT TO BE USED, IN WHOLE OR IN PART, FOR ANY OTHER PROJECT WITHOUT THE WRITTEN AUTHORIZATION OF CH2MHILL CANADA LIMITED. ©CH2M HILL CANADA LIMITED