

CVRD Public Open House

3L Developments Inc.

RGS Amendment Proposal

September 6, 2018
Florence Filberg Centre



What is the RGS?



- Partnership among rural areas and municipalities
- 20 year Plan to inform land use and infrastructure decision making
- Guide to managing growth
- Framework for protecting high quality of life in the rural and urban areas

Guiding Principles

- Protect natural features/systems
- Protect unique character, needs and interests of rural and urban areas
- Use land efficiently
- Compact growth
- Transportation options
- Maximize infrastructure investment
- Direct growth to core settlement areas



How is the RGS implemented?

- Official Community Plan policies
- Agreements with Provincial agencies
- Regulatory bylaws
- Monitor – evaluate progress using indicators



Growth Management Map

Core Settlement Areas

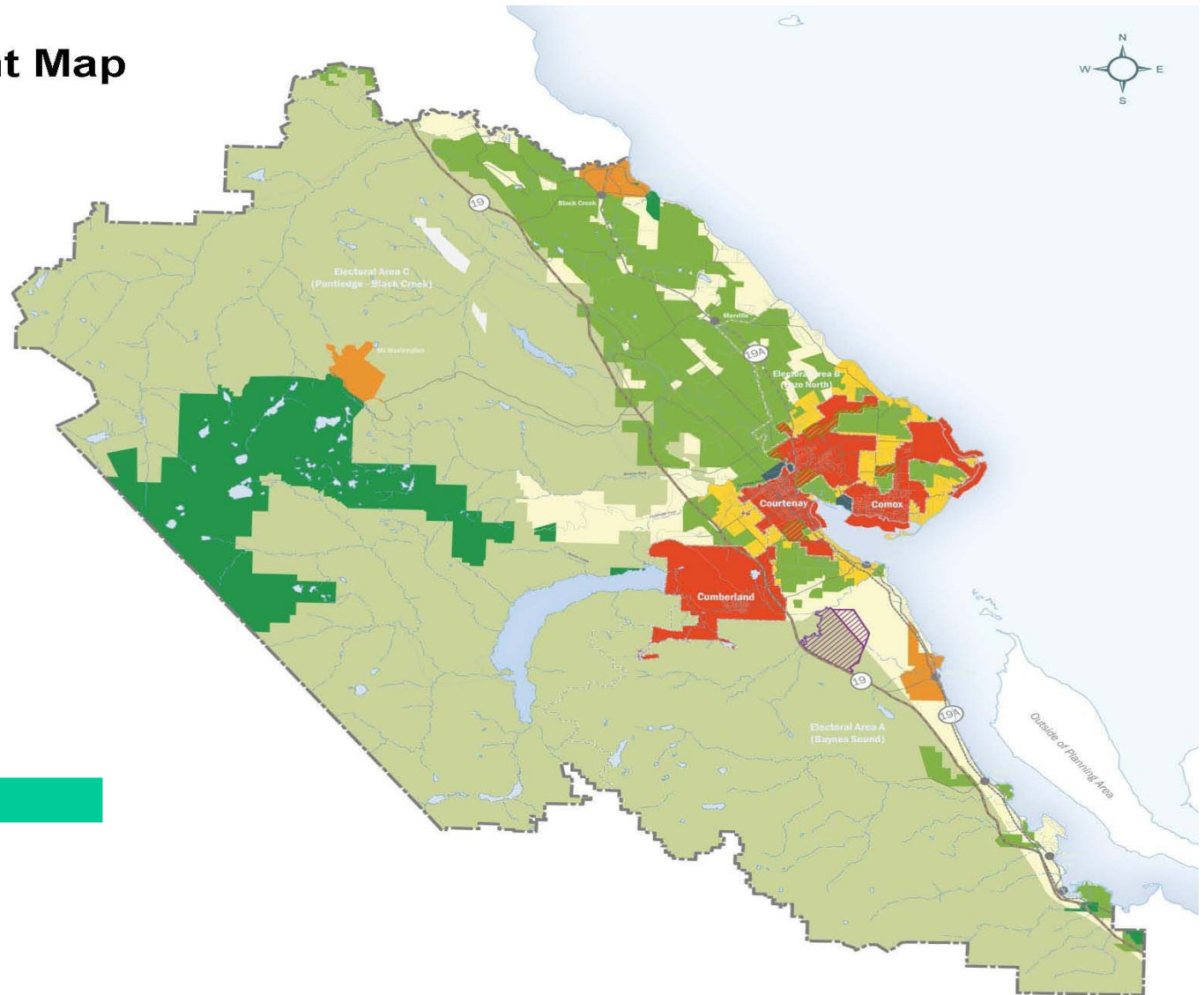
- Municipal Areas
- Settlement Nodes
- K'ómoks First Nation Lands
- Sage Hills Sports and Education Node
- Settlement Expansion Areas
- Agricultural Areas within Municipal Areas

Rural Areas

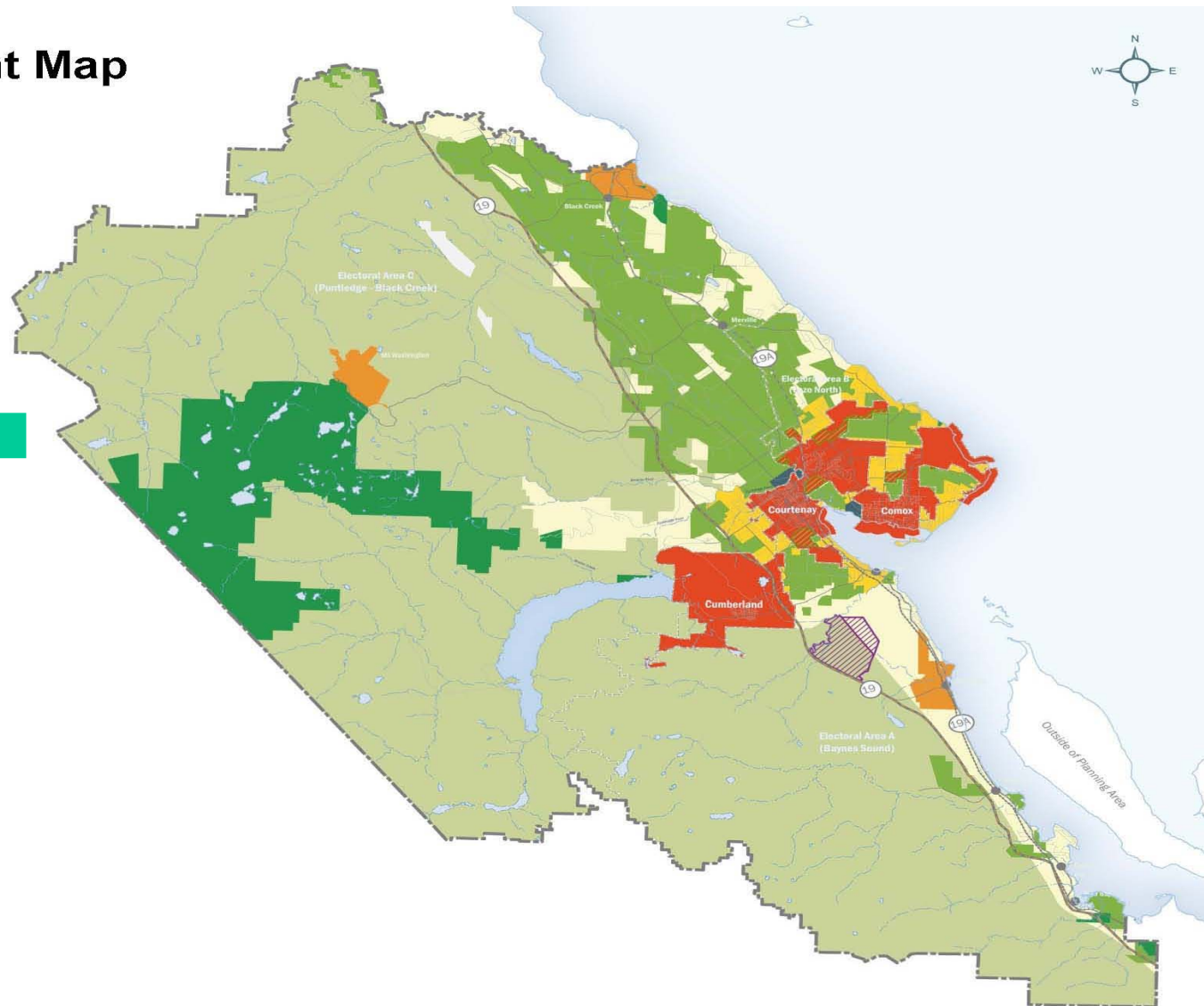
- Rural Settlement Areas
- Agricultural Areas

Resource Areas and Provincial Parks

- Resource Areas
- Provincial Park

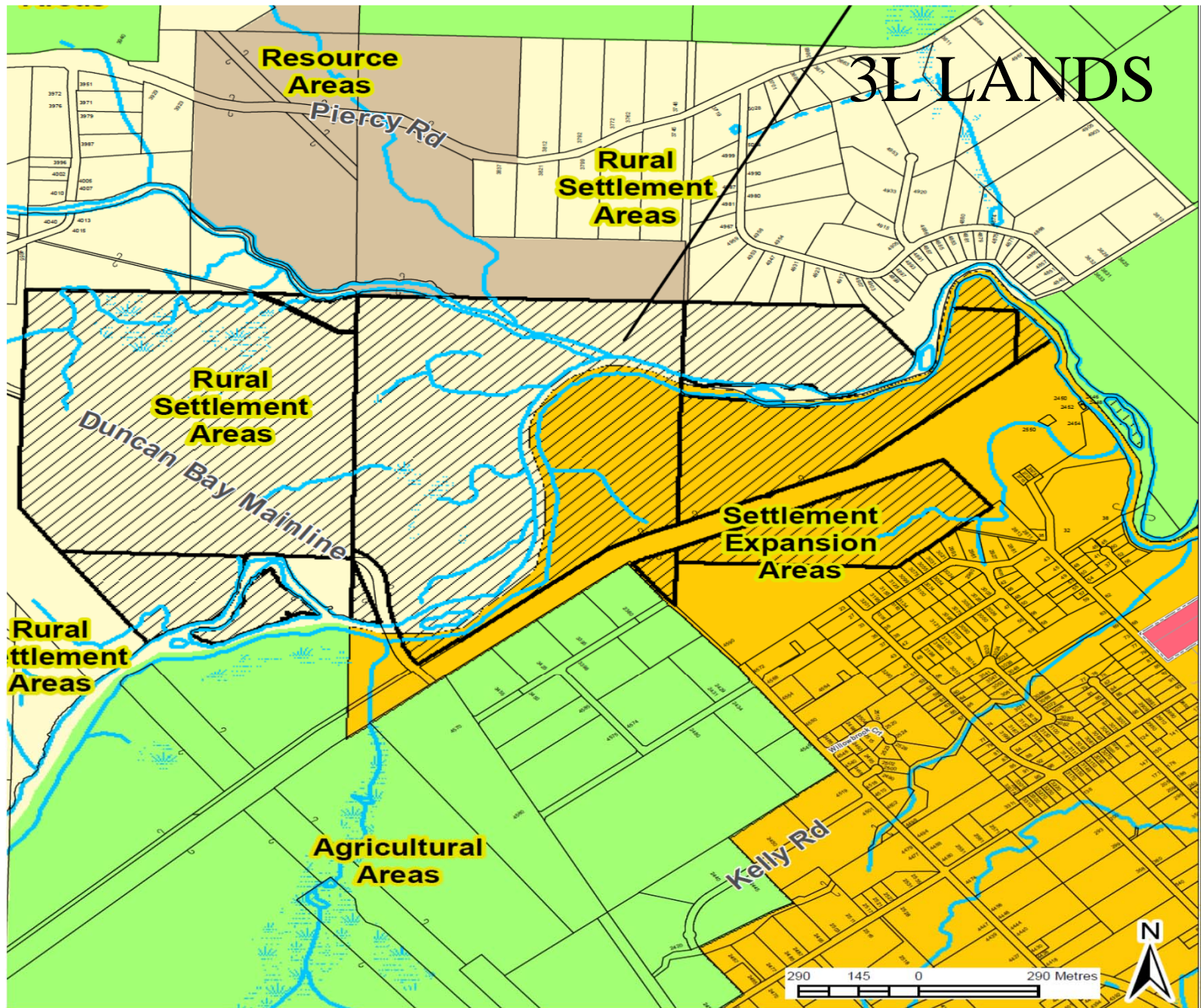


Growth Management Map



Decision Making





Standard Amendment for 3L Application

Standard Amendment Process

Public Engagement Opportunities

