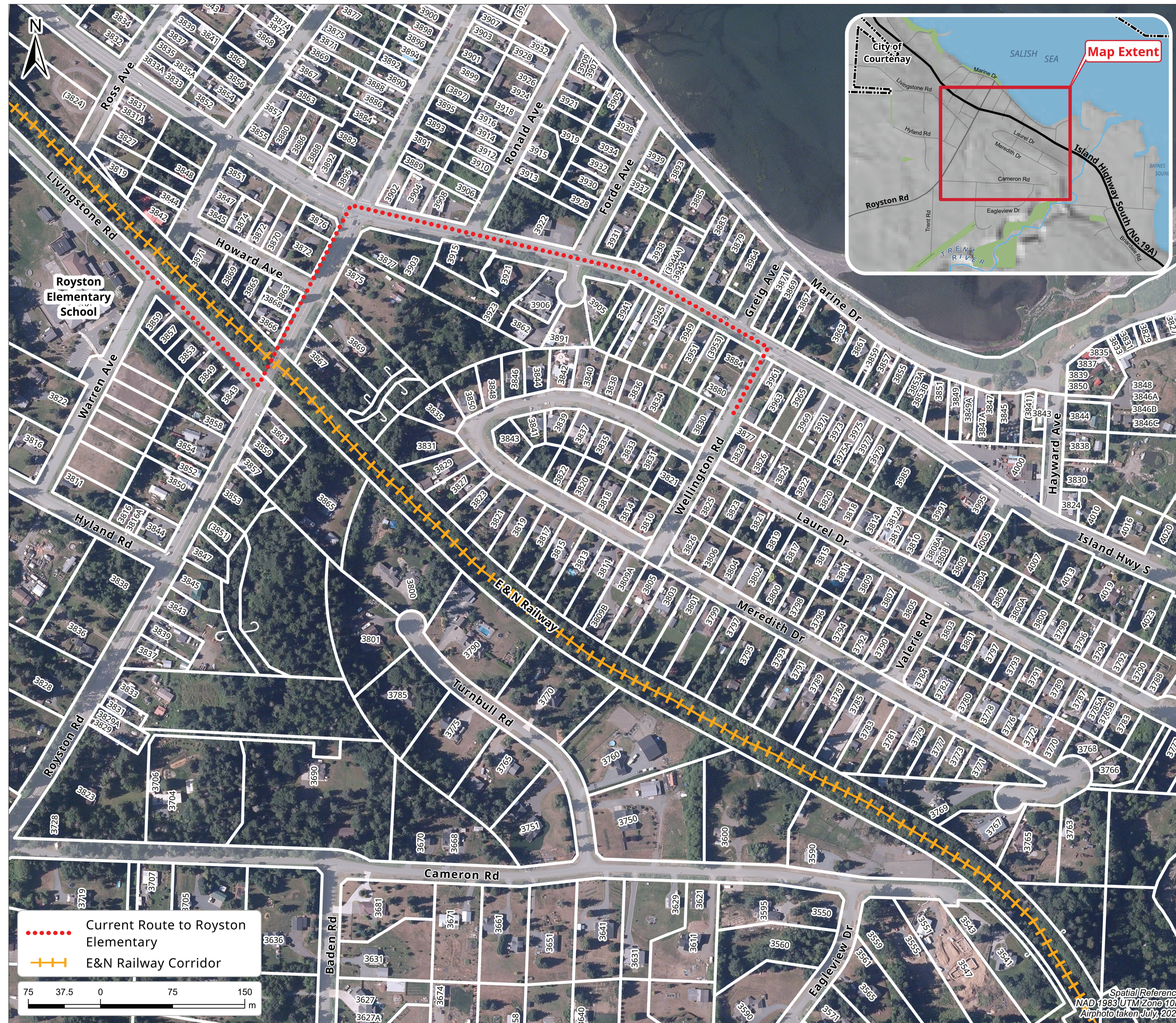


Laurel Heights / Meredith Drive Proposed Pathway



Current Situation

- Residents have identified a desire for a trail connecting the Laurel Heights/Meredith Drive neighbourhood to the Island Rail Corridor to improve neighbourhood safety for children walking to and from Royston Elementary School.
- Currently, children in the neighbourhood access the school via Highway 19A and Royston Road.

Community Challenges

- Currently there are no public access points that connect Laurel Heights/Meredith Drive to the Island Rail Corridor.
- Any future public access to the Island Rail Corridor would require access through private property and approval from the Island Corridor Foundation.
- Creating a public connection from the Laurel Heights neighbourhood to the railway corridor will require the acquisition of private property or the approval of a statutory right-of-way over private property.

Where Do We Go from Here?

- If the CVRD cannot identify a feasible connection to the Corridor, the current walking route will remain as-is.
- Properties along Meredith Drive can inquire to the CVRD if there is interest in discussing a connection to the Island Rail Corridor over their private property.