

ADD-A-DAY COLLECTION SCHEDULE

Place garbage and recycling out by:



8:00 am

- 1 can of garbage
- 1 can of garbage and unlimited recycling

JANUARY 2026						
SUN	MON	TUE	WED	THU	FRI	SAT
28	29	30	31	1	2	3
4	5	6	7	8	9	10
11	12	13	14	15	16	17
18	19	20	21	22	23	24
25	26	27	28	29	30	31

FEBRUARY 2026						
SUN	MON	TUE	WED	THU	FRI	SAT
1	2	3	4	5	6	7
8	9	10	11	12	13	14
15	16	17	18	19	20	21
22	23	24	25	26	27	28
1	2	3	4	5	6	7

MARCH 2026						
SUN	MON	TUE	WED	THU	FRI	SAT
1	2	3	4	5	6	7
8	9	10	11	12	13	14
15	16	17	18	19	20	21
22	23	24	25	26	27	28
29	30	31	1	2	3	4

APRIL 2026						
SUN	MON	TUE	WED	THU	FRI	SAT
29	30	31	1	2	3	4
5	6	7	8	9	10	11
12	13	14	15	16	17	18
19	20	21	22	23	24	25
26	27	28	29	30	1	2

MAY 2026						
SUN	MON	TUE	WED	THU	FRI	SAT
26	27	28	29	30	1	2
3	4	5	6	7	8	9
10	11	12	13	14	15	16
17	18	19	20	21	22	23
24	25	26	27	28	29	30

JUNE 2026						
SUN	MON	TUE	WED	THU	FRI	SAT
31	1	2	3	4	5	6
7	8	9	10	11	12	13
14	15	16	17	18	19	20
21	22	23	24	25	26	27
28	29	30	1	2	3	4

JULY 2026						
SUN	MON	TUE	WED	THU	FRI	SAT
28	29	30	1	2	3	4
5	6	7	8	9	10	11
12	13	14	15	16	17	18
19	20	21	22	23	24	25
26	27	28	29	30	31	1

AUGUST 2026						
SUN	MON	TUE	WED	THU	FRI	SAT
26	27	28	29	30	31	1
2	3	4	5	6	7	8
9	10	11	12	13	14	15
16	17	18	19	20	21	22
23	24	25	26	27	28	29

SEPTEMBER 2026						
SUN	MON	TUE	WED	THU	FRI	SAT
30	31	1	2	3	4	5
6	7	8	9	10	11	12
13	14	15	16	17	18	19
20	21	22	23	24	25	26
27	28	29	30	1	2	3

OCTOBER 2026						
SUN	MON	TUE	WED	THU	FRI	SAT
27	28	29	30	1	2	3
4	5	6	7	8	9	10
11	12	13	14	15	16	17
18	19	20	21	22	23	24
25	26	27	28	29	30	31

NOVEMBER 2026						
SUN	MON	TUE	WED	THU	FRI	SAT
1	2	3	4	5	6	7
8	9	10	11	12	13	14
15	16	17	18	19	20	21
22	23	24	25	26	27	28
29	30	1	2	3	4	5

DECEMBER 2026						
SUN	MON	TUE	WED	THU	FRI	SAT
29	30	1	2	3	4	5
6	7	8	9	10	11	12
13	14	15	16	17	18	19
20	21	22	23	24	25	26
27	28	29	30	31	1	2

ENSURE MORE MATERIALS ARE RECYCLED AND KEPT OUT OF LANDFILL BY REMEMBERING THESE PRO-TIPS:

- 1 Line it up. Keep 1m (3ft) between your recycling container and your garbage bin.
- 2 Keep it clean. Empty and rinse all containers.
- 3 Flatten and cut. If your cardboard is too large for your collection container, flatten and cut down to smaller pieces. Stack beside recycling collection container. Remember to keep plastic wrap out of your recycling!
- 4 Make a depot trip. Return glass, foam packaging, plastic bags and overwrap, and other flexible plastic packaging to a RecycleBC depot.



RECYCLING QUESTIONS?  
For information recycling visit: [cswm.ca/recycling](https://cswm.ca/recycling)

NEARBY DEPOTS

Comox Valley Waste Management Centre  
3699 Bevan Road  
Cumberland, BC  
Tel: 250-334-6016

Courtenay Return-It Depot  
493 Puntledge Road  
Courtenay, BC  
Tel: 250-338-6013

Find your nearest depot location at:  
[RecycleBC.ca/Depots](https://RecycleBC.ca/Depots)

ABOUT RECYCLE BC

Recycle BC is a not-for-profit organization responsible for residential packaging and paper recycling throughout BC, servicing over 1.8 million households. Recycle BC ensures your household materials are picked up, sorted, and responsibly recycled. Our program is funded by over 1,200 businesses that include retailers, manufacturers and restaurants that supply packaging and paper to BC residents, shifting costs away from homeowners.

For more information visit:  
[RecycleBC.ca](https://RecycleBC.ca)  
@RecycleBC



Royston participates in BC's province-wide recycling program managed by



2026 Royston Garbage & Recycling Collection Schedule



[comoxvalleyrd.ca/royston](https://comoxvalleyrd.ca/royston)

HOUSEHOLD HAZARDOUS WASTE HOURS

**Comox Valley**  
3699 Bevan Road,  
Cumberland  
9:30 am – 5:30 pm  
(closed 12:30 - 1:00 pm)  
**Thursdays & Fridays**  
**Open on select Saturdays:**

Jan 10	July 11
Feb 7	Aug 8
Mar 7	Sept 12
Apr 11	Oct 10
May 9	Nov 7
June 6	Dec 5

**Campbell River**  
6700 Argonaut Road,  
Campbell River  
9:30 am – 5:30 pm  
(closed 12:30 - 1:00 pm)  
**Tuesdays & Wednesdays**  
**Open on select Saturdays:**

Jan 24	July 25
Feb 21	Aug 22
Mar 21	Sept 26
Apr 25	Oct 24
May 23	Nov 21
June 20	Dec 19

HHW Closed on all statutory holidays & December 24

For a complete list of hours visit [cswm.ca/hhw](https://cswm.ca/hhw)

QUESTIONS ABOUT YOUR SERVICE OR MISSED COLLECTION?  
Call Emterra at 250-336-8066

If you have questions about your garbage and recycling curbside service, including service disruptions, holiday schedules, the types of recycling and garbage containers to use, or why a certain material was left behind, contact **Emterra Environmental at 250-336-8066**

STAY UP TO DATE

Download the “CSWM Waste Wise” app from your App Store. Sign up to receive service updates and learn more about what goes where.



# CURBSIDE RECYCLING

## PAPER

PUT INTO SMALLER CURBSIDE CONTAINER

Recycle at curbside or depot  
Clean and dry paper only



## CONTAINERS

PUT INTO CURBSIDE CONTAINER

Recycle at curbside or depot  
Empty and rinse containers

\*You can use any container or cardboard box marked "Recycling".



Newspapers, inserts, flyers



Magazines, catalogues, phone books



Boxboard boxes



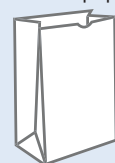
Moulded paper



Household paper



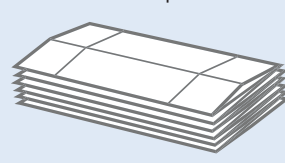
Envelopes



Paper bags



Shredded paper  
(contain in clear plastic bag first)



Cardboard boxes



Plastic bottles, jars and jugs



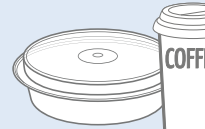
Plastic trays and clamshells



Plastic garden pots and seedling trays



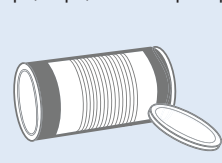
Caps, tops, lids and pumps



Plastic or paper take-out cups, bowls and lids



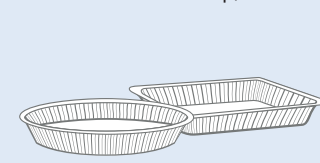
Cartons for soup, etc.



Metal cans



Aerosol cans (empty)



Foil wrap and take out containers

- ✓ Greeting cards
- ✓ Paper gift wrap
- ✓ Paper gift bags

- ✓ Paper carry-out beverage trays
- ✓ Cores from paper towel and toilet paper

- ✓ Plastic packaging for toys, batteries etc. Separate plastic from paper backing
- ✓ Spiral wound cans and lids for frozen juice concentrate, chips, etc.

- ✓ Plastic pails less than 25L for laundry detergent, cat litter, etc.
- ✓ Plastic tubs for yogurt, margarine, etc.

## NOT ACCEPTED CURBSIDE



Hard and soft cover books



Plastic bags and overwrap



Clothing and textiles



Food, yard waste and wood

- ✗ Non-paper gift wrap, foil wrap, cards or paper with glitter
- ✗ Rubber bands, ribbons, bows
- ✗ Padded envelopes
- ✗ Bags and boxes with foil liners
- ✗ Paper towels, napkins and tissues
- ✗ Foil or plastic lined paper bags

## NO HAZARDOUS MATERIALS

Exclude batteries; medical sharps; bleach or aerosol containers with any contents remaining; compressed gas cylinders, for example used propane cylinders; containers for paint, motor oil, vehicle lubricants, or antifreeze; or containers for pesticides with the words DANGER, WARNING, or POISON, and precautionary octagon or diamond symbols with skull and cross bones.

## NOT ACCEPTED CURBSIDE



Plastic bags and overwrap



Hazardous waste



Glass



Electronics and appliances



Toys and games



Hangers, pots, pans and other scrap metal

- ✗ Foam packaging
- ✗ Chip or foil bags, candy wrappers
- ✗ Stand-up pouches
- ✗ Packaging labeled biodegradable or compostable
- ✗ Wiring, metal cords, hardware
- ✗ Clothing, textiles and shoes
- ✗ Food and yard waste

# DROP-OFF ONLY

## WHAT TO TAKE TO THE RECYCLING DEPOT



### GLASS (return to depot)

! Please put all lids in blue box.



Glass bottles - clear and coloured

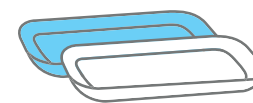


Glass jars - clear and coloured

- ✗ Drinking glasses, dishes, cookware
- ✗ Window glass, mirrors

- ✗ Ceramic products
- ✗ Light bulbs or light fixtures

### FOAM PACKAGING (return to depot)



Foam meat trays  
(remove absorbent pad)



Foam take-out containers and cups



Foam cushion packaging used to protect electronics etc.

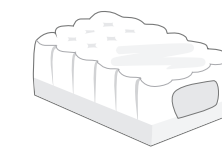
- ✗ Blue or pink foam insulation, packing chips and peanuts

- ✗ Squishy or flexible foam, foam noodles

### PLASTIC BAGS AND OVERWRAP (return to depot)



Plastic bags



Outer bags and product wraps

- ✓ Bags for groceries, produce, dry bulk foods, frozen vegetables, water softener, salt, garden products, newspapers, etc.

- ✓ Overwrap for diapers, feminine hygiene products, paper towels, soft drink flats



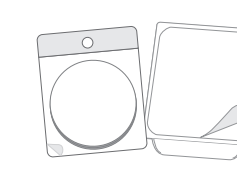
Want to recycle something not included here?

Search CSWM's Waste Wizard at [comoxvalleyrd.ca/Royston](http://comoxvalleyrd.ca/Royston), or download the "CSWM Waste Wise" app from your App Store.

### OTHER FLEXIBLE PLASTIC PACKAGING (return to depot)



Crinkly wrappers and bags



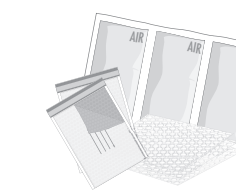
Flexible packaging with plastic seal



Zipper lock and stand-up pouches



Woven plastic bags



Non-food protective packaging

- ✗ Plastic squeeze tubes, plastic-lined paper, paper-lined plastic, plastic strapping

- ✗ 6-pack rings, biodegradable plastic, vinyl

### SINGLE-USE AND PACKAGING-LIKE PRODUCTS

Starting January 1, 2023 designated single-use products and packaging-like products will be accepted for recycling in our program per amendments to the Province of BC Recycling Regulation.

For more information on what is accepted, visit: [Recyclebc.ca](http://Recyclebc.ca)

### SQUISHY CUSHION PACKAGING

Starting January 1, 2023, polyethylene (PE) cushion packaging will also be accepted for recycling.

With the combination of plastic bags and overwrap, and other flexible plastic packaging into one collection category, we are now able to accept squishy cushion packaging (sometimes known as squishy foam) in this flexible plastics category.

For more information, visit  
[RecycleBC.ca/FlexiblePackaging](http://RecycleBC.ca/FlexiblePackaging)